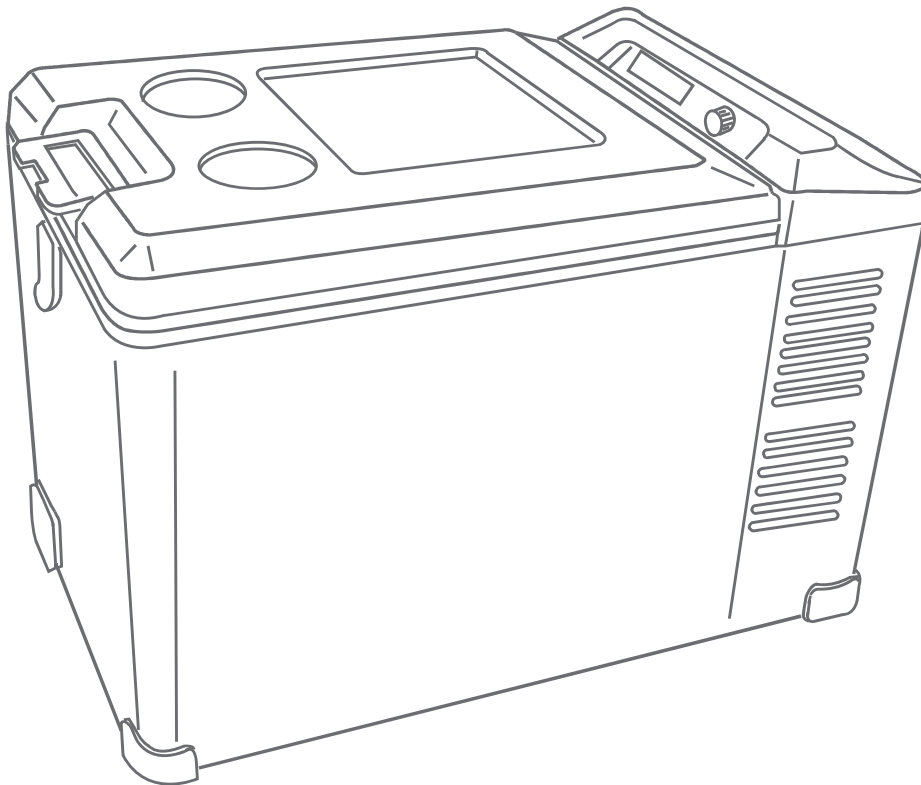




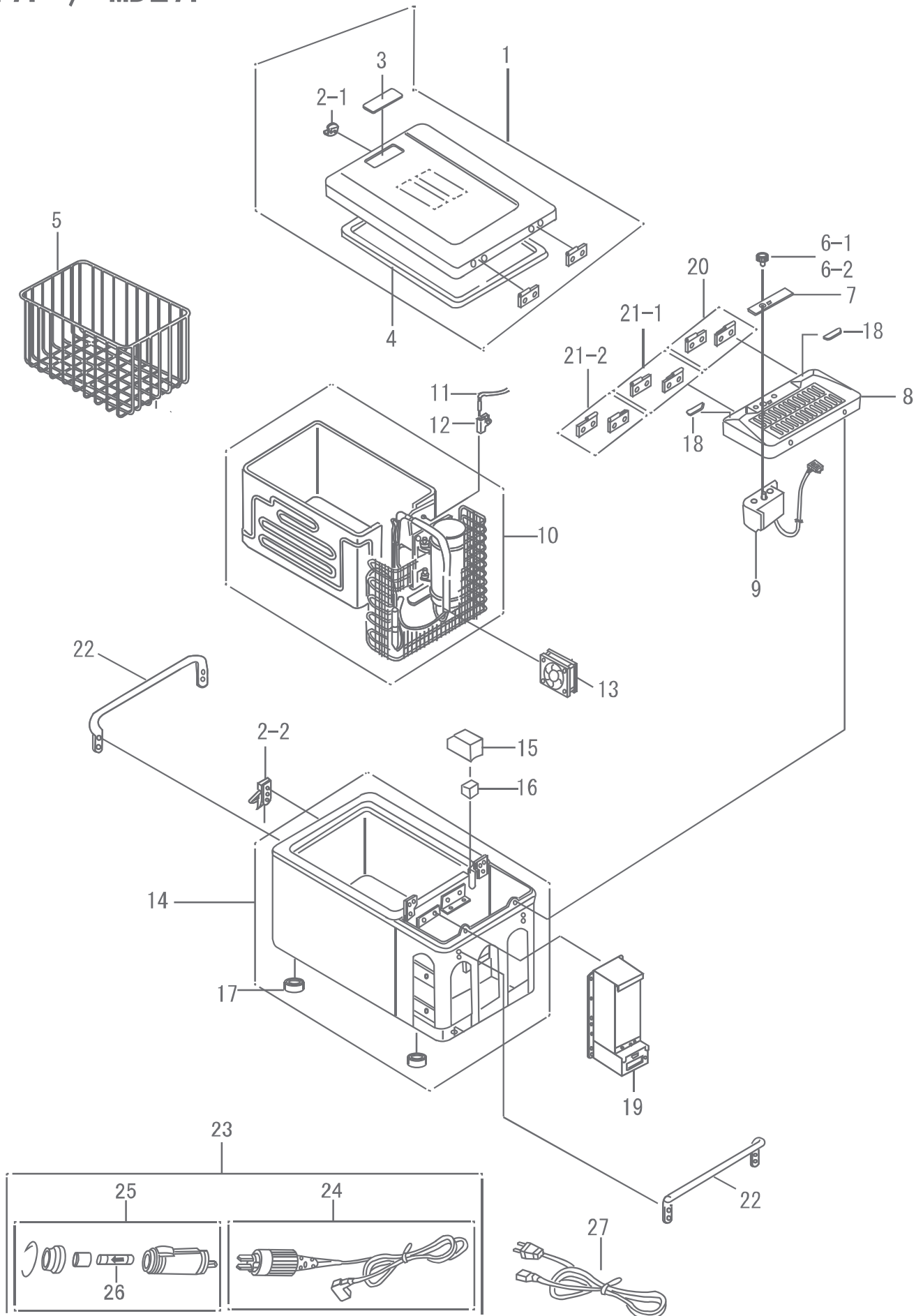
ENGEL

EU model PARTS LIST



SAWAFUJI ELECTRIC

MT17F / MT27F MD17F / MD27F



QTY SECTION	MODEL	MODEL CODE	PRODUCTION PERIOD	UNIT TYPE	REMARKS
A	MT17F-G3-D	0642 015 1S13	2015.01 ~ 2020.12	K3	FCM (Food Contact Materials)
B	MT27F-G3-D	0642 025 1S13	2014.11 ~ 2020.12	K3	FCM (Food Contact Materials)
C	MD17F-E	0642 015 1210	2021.03~	K3	FCM (Food Contact Materials)
D	MD27F-E	0642 025 1210	2021.03~	K3	FCM (Food Contact Materials)

ITEM NO.	DESCRIPTION	ITEM CODE	QTY				QTY included per item code	REMARKS
			Used per fridge					
			A	B	C	D		
1	DOOR ASSEMBLY	1600 542 30X9	1	1	1	1	1	
2-1	LATCH SET (2-1 & 2-2 included)	6260 005 00X9	1	1	1	1	1	
2-2								
3	LABEL, Door	5450 821 00X9	1	1	1	1	5	
4	GASKET	4148 031 10X9	1	1	1	1	1	
5	BASKET (MT17F)	5230 010 10X9	1	-	1	-	1	
	BASKET (MT27F)	5230 048 00X9	-	1	-	1	1	
6-1	DIAL KNOB, STANDARD	1602 067 00X8	1	1	1	1	5	
6-2	DIAL KNOB (with white indicator line)	1602 067 10X9	Opt	Opt	Opt	Opt	5	
7	DIAL LABEL	5450 423 10X9	1	1	1	1	5	
8	COVER ASSEMBLY	1602 052 11X9	1	1	1	1	1	
9	TEMPERATURE CONTROLLER	1601 169 00X9	1	1	1	1	1	
10	COOLING UNIT (K3)	1610 139 10X9	1	1	1	1	1	
11	EVAPORATOR THERMISTOR	6055 081 10X9	1	1	1	1	1	Replace the thermistor and holder as a set.
12	HOLDER	4223 050 20X9	1	1	1	1	1	
13	MOTOR FAN	6080 007 40X9	1	1	1	1	1	
14	CABINET ASSEMBLY (MT17F)	1600 544 20X9	1	-	1	-	1	
	CABINET ASSEMBLY (MT27F)	1600 546 20X9	-	1	-	1	1	
15	COVER PIPE	4221 010 00X9	1	1	1	1	1	
16	INSULATOR, HEAT	4390 155 00X9	1	1	1	1	1	
17	CUSHION	4120 058 00X9	1set	1set	1set	1set	4	1set= CUSHION 4 Pieces
18	CUSHION (Rx1 & Lx1 as 1 set)	4120 191 00X9	1set	1set	1set	1set	5 sets	4120 191 00X9= 5sets(Rx5 & Lx5)
19	POWER SUPPLY (K3)	1601 184 12X9	1	1	-	-	1	
		1601 184 22X9	-	-	1	1	1	
20	HINGE (long pin)	1609 345 00X9	1	1	1	1	1	
21-1	HINGE, DIAL SIDE (short pin) (option for removable door)	1609 345 20X9	1	1	1	1	1	
21-2	HINGE, DIAL SIDE (long pin) (option for non-removable door)	1609 345 10X9	Opt	Opt	Opt	Opt	1	
22	HANDLE	3233 012 00X9	1set	1set	1set	1set	2	1set= HANDLE 2 Pieces
23	DC CORD ASSEMBLY	1912 404 00X9	1	1	1	1	1	
24	DC Cord (without Plug Assembly)	1912 401 00X9	1	1	1	1	1	
25	PLUG ASSEMBLY	1602 121 00X9	1	1	1	1	1	
26	SPECIAL THERMAL FUSE	1603 002 00X9	1	1	1	1	1	
27	AC CORD ASSEMBLY	1912 178 00X0	1	1	-	-	1	